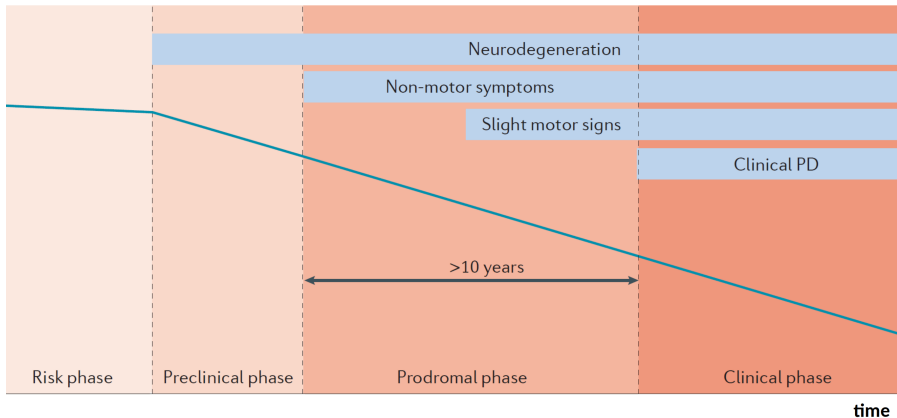


# SHARE-CZ neuroSHARE What Others are Doing?

Radim Boháček  
CERGE-EI

May 2025

# neuroSHARE

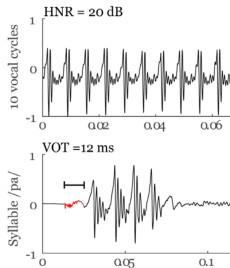


- ▶ Early markers for neurodegenerative diseases: Prodromal phase
- ▶ Parkinson's and Alzheimer's disease
- ▶ Dementia with Lewy bodies

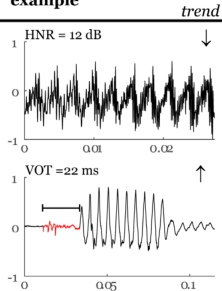
# neuroSHARE

- ▶ Clinics to Survey
- ▶ Three tests
  - ▶ Speech test
  - ▶ Standardized olfactory test
  - ▶ Sleep test (REM behavior disorder)
- ▶ Power of combination
- ▶ Collected 2,097 tests
- ▶ Clinical validation (5%): consent 71%

**Healthy speech example**



**Hypokinetic dysarthria example**



## neuroSHARE in other countries

- ▶ Self-administered (remote) version
- ▶ Facial measures by phone or computer
- ▶ Hearing
- ▶ Vision
- ▶ Switzerland: CZ-CH funds in wave 11



# SHARE-CZ Biomarkers and Exposomes

## Biomarkers

- ▶ Venous blood samples
- ▶ Harmonized with HRS
- ▶ Markers for neurodegeneration
- ▶ Wave 11

## Exposomes

- ▶ Internal and External
- ▶ Short- and long-term cumulative environmental exposure
- ▶ Relate outcome measures to heterogeneous environment

RECETOX Laboratories & EIRENE-ERIC

Link to administrative health data (wave 11)

# MAKE SHARE DATA GREAT AGAIN

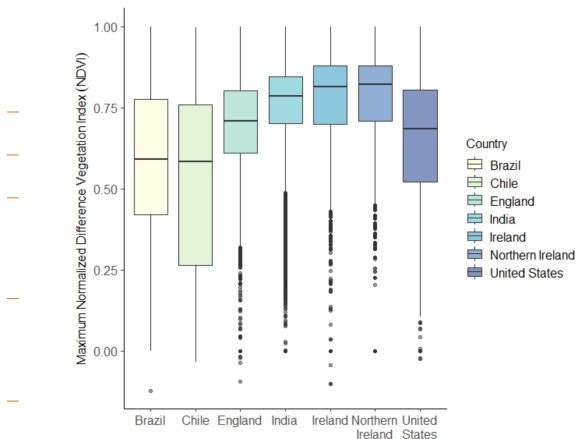
What Others Are Doing?  
HRS Biomarker Network Meeting

# Exposomes

- ▶ Gateway
- ▶ EHEN and EIRENE-ERIC
- ▶ External =  
Just link  
geographic data
- ▶ Internal!

## THE EUROPEAN HUMAN EXPOSOME NETWORK (EHEN)

EHEN is the world's largest project network studying the impact of environmental exposure on health



# Venous Blood

- ▶ HRS, ELSA, NICOLA, TILDA, MHAS, CHARLS
- ▶ Columbia (COSA) Brazil
- ▶ India (LASI-DAD) Sri Lanka (SLHAS)
- ▶ Lebanon (LSAHA)
- ▶ Kenya (LOSHAK)
- ▶ Costa Rica (CRELES): Telomeres length
- ▶ BCS70 Cohort, HS&B



# Venous Blood Samples

- ▶ Hallmarks of Aging:  
Mitochondrial function, cellular senescence, cell exhaustion
- ▶ Biomarkers for neurodegeneration
- ▶ Ageing biomarkers
- ▶ Epigenetic age
- ▶ DNA
- ▶ GWAS
- ▶ Storage for future analysis

# COSA Pilot Design



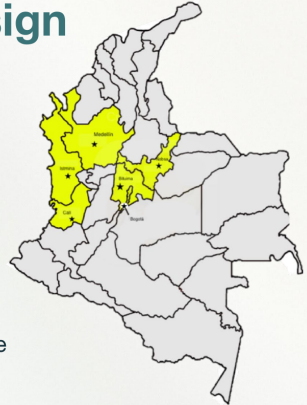
6 cities (municipios), 3 urban/3 rural



Face-to-face interviews with adults 50+ and their spouses N=740 (36 proxies)

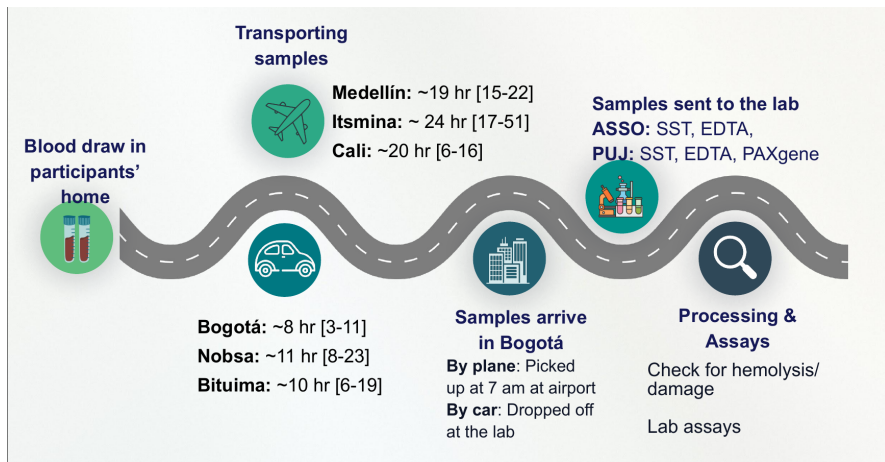


Subsample selected for performance-based assessment and whole blood collection



<https://cosaweb.org>

- ▶ COSA (Columbia)
- ▶ Venous blood

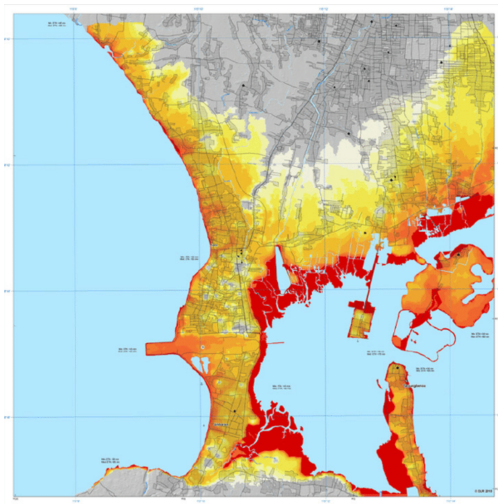


► Blood transfer from Medellín to Bogota

# What Others Are Doing: STAR

## Study of Tsunami Aftermath & Recovery

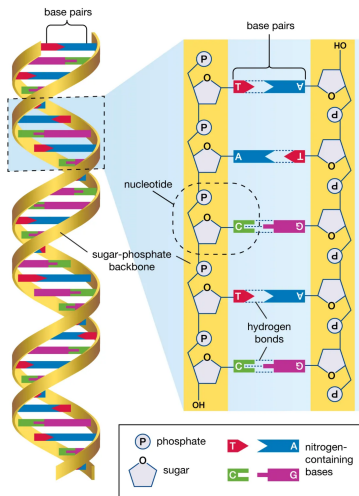
- ▶ Blood samples
- ▶ Dried plasma spots
- ▶ Hair
- ▶ Cognition
- ▶ Research on trauma effects





# What Others Are Doing: HRS

- ▶ Salivary DNA  
(once per person)
- ▶ DNA sequencing
- ▶ VBS  
(panel every 6 years)
- ▶ Metals and infection
- ▶ Neuropathological markers



## What Others Are Doing: ELSA

- ▶ Nurse visit
- ▶ Venous blood (every 4y)
- ▶ Cardiometabolic profile
- ▶ DNAm, RNAseq
- ▶ Lung function
- ▶ Hair
- ▶ Nutrition
- ▶ Hearing
- ▶ HCAP2

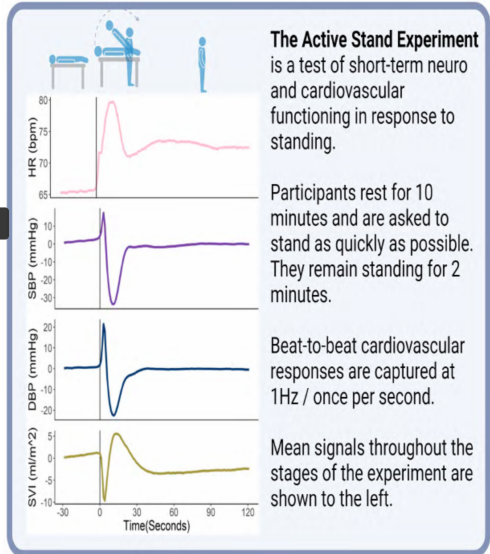


# What Others Are Doing: NICOLA

RESEARCH AREA	New measures
Cognition	<ul style="list-style-type: none"> <li>• <b>Blood based markers of neurodegeneration</b> i.e. amyloid and phosphorylated tau proteins, NFL and GFAP</li> <li>• <b>Clinical validation of HCAP tool</b></li> </ul>
Eye health	<ul style="list-style-type: none"> <li>• Novel imaging modalities incl. <b>widefield retinal OCT, OCT-angiography and anterior segment OCT</b></li> <li>• <b>Epigenetic clock analyses</b> to define exposure associated methylation changes that influence aging, age-related ocular disease and retinal markers of brain health</li> </ul>
Kidney disease	<ul style="list-style-type: none"> <li>• Investigation of <b>genetic, epigenetic and proteomic basis of kidney disease</b> and contributing to largest genome-wide association study (GWAS) conducted to date</li> <li>• Identification of <b>genetic changes, DNA methylation profiles, telomere variation and mitochondrial dysfunction</b> as risk factors for renal outcomes</li> </ul>
Molecular biomarkers	<ul style="list-style-type: none"> <li>• <b>Long read sequencing</b> to identify mosaic loss of chromosome X and Y that occurs more frequently as people age</li> </ul>
Microbiome	<ul style="list-style-type: none"> <li>• Analysis of <b>stool samples</b> to explore the influence of medicines on the microbiome, the influence of gut microbiome on metabolism and effectiveness of medication and microbial taxa enrichment/depletion to inform personalised medicine</li> <li>• Analysis of saliva, oral examination in a subset</li> </ul>
Nutrition	<ul style="list-style-type: none"> <li>• Nutrient biomarkers and nutrient intake data for &gt;50 nutrients based on FFQ</li> <li>• Impact of <b>food insecurity</b> and <b>diet quality</b> on aging</li> </ul>
Environment	<ul style="list-style-type: none"> <li>• <b>Linkage of &gt;280 environment related variables</b> to Wave 1 and 2 data</li> <li>• Deriving harmonized environmental variables for international comparative analyses</li> <li>• Development of a publicly accessible <b>environmental data geoportal</b></li> </ul>

# What Others Are Doing: TILDA

- ▶ VBS (wave 1, 3, 6)
- ▶ Hair (wave 3)
- ▶ Faecal (wave 6)
- ▶ Saliva
- ▶ Active stand:  
Blood pressure



# Cognition and neuropsychology



## TMB cognitive assessments

### TMB Digit Symbol Matching Processing Speed



Reaction time -> milliseconds (ms)  
Lower score= faster processing speed

### Backward Digit Span Working Memory

532

Then press the numbers on the **keyboard**  
in **reverse** order.

Number string score  
Higher score= better memory

- ▶ Digital cognition and neuropsychology
- ▶ Add Health: CAPS (Cognitive Assessment, Physical and Sensory Functions)
- ▶ Columbia University and NIH

# Lessons

- ▶ Project-oriented collections
- ▶ Run by external experts:  
Whole survey (Costa Rica, Bali) or as special projects
- ▶ Institutional structure  
External researchers involved  
Project managers and accountability
- ▶ Strategy and planning
- ▶ Content is determined by expert research community

# SHARE

- ▶ SHARE is behind
- ▶ Lack of expertise: internal or external
- ▶ Financing only for innovative research projects
- ▶ Money train has left
- ▶ Constraints in capacity
- ▶ External private financing
- ▶ Need to move fast and pilot new projects
- ▶ Connect to projects and experts