

MAKE SHARE DATA GREAT AGAIN

xxxSHARE

SHARE-CZ

Jan Rusz (Czech Technical University)

Petr Dušek (First Faculty of Medicine, Charles University)

May 2024

xxxSHARE: Innovations

- ▶ geoSHARE (geographic data)
- ▶ neuroSHARE (neurodegenerative diseases)
- ▶ bioSHARE (biomarkers)
- ▶ geneSHARE (genetics)
- ▶ expoSHARE (exposomes)
- ▶ **xxx**

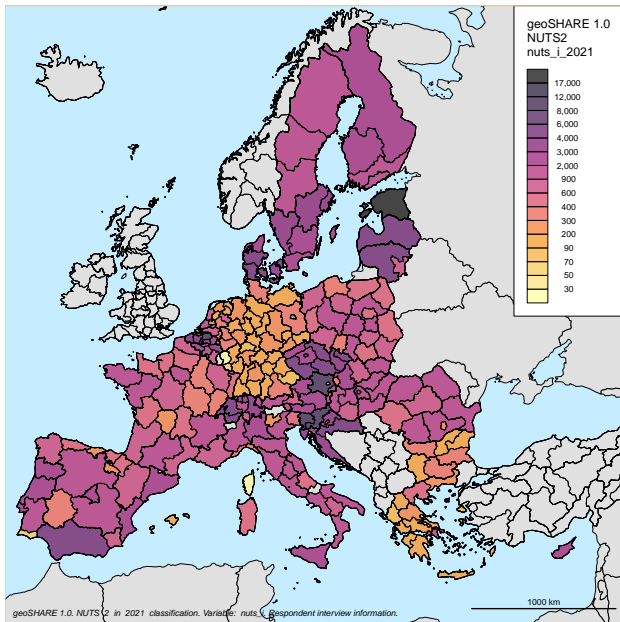
geoSHARE 1.0

- ▶ Data recovery
- ▶ Sampling
- ▶ Interview

	Wave 1	Wave 2	Wave 3	Wave 4	Wave 5	Wave 6	Wave 7	Wave 8	Wave 9
AT	0	0	1	1	1	1	1	1	1
BE FR	0	1	1	0	0	1	1	1	1
BE NL	1	1	1	1	1	1	1	1	1
BG							0	0	1
CH	0	1	1	1	1	1	1	1	1
CY							0	1	1
CZ		1	1	1	1	1	1	1	1
DE	0	0	0	0	0	0	0	1	1
DK	1	1	1	1	1	1	1	1	1
EE				0	1	1	1	1	1
EL	0	0	0			0	0	0	1
ES	0	0	1	1	1	1	1	1	1
FI							1	1	1
FR	0	0	0	0	0	1	1	1	1
HR						1	1	1	1
HU				1			1	1	1
IL	1	1			1	1	1	1	1
IT	0	0	0	0	1	1	1	1	1
LT							1	1	1
LU					0	0	0	0	0
LV							1	1	1
MT							0	1	1
NL	0	0	0	0	0			1	1
PL		1	1	1	0	1	0	0	1
PT				1		1	1	1	1
RO							1	1	1
SE	0	0	1	1	1	1	1	1	1
SI				0	0	1	1	1	1
SK							1	1	1

geoSHARE 1.0

- ▶ NUTS 1-3
SHARE-Covid19
Horizon project
- ▶ Data access
- ▶ Other data?
- ▶ Municipality
- ▶ Postal codes
- ▶ Future



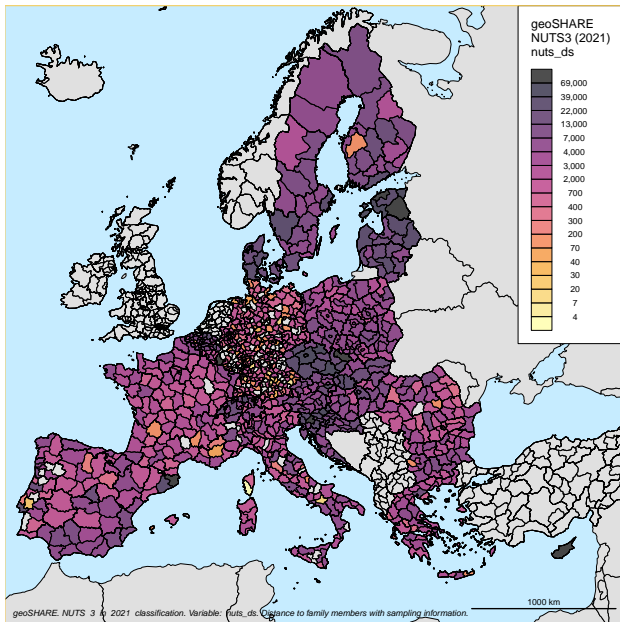
geoSHARE: Household Episodes Panel

- ▶ Full geographic database
- ▶ Sampling
- ▶ Baseline and interview
- ▶ Life history
- ▶ Additional information: move, distance to children and parents
- ▶ R/HH geographic location every year

geoSHARE HEP

- ▶ `nuts_w`
`nuts_ws`
- ▶ `nuts_lh`
- ▶ `nuts`
`nuts_s`
- ▶ `nuts_d`
`nuts_ds`
- ▶ Recover
additional
20-30%

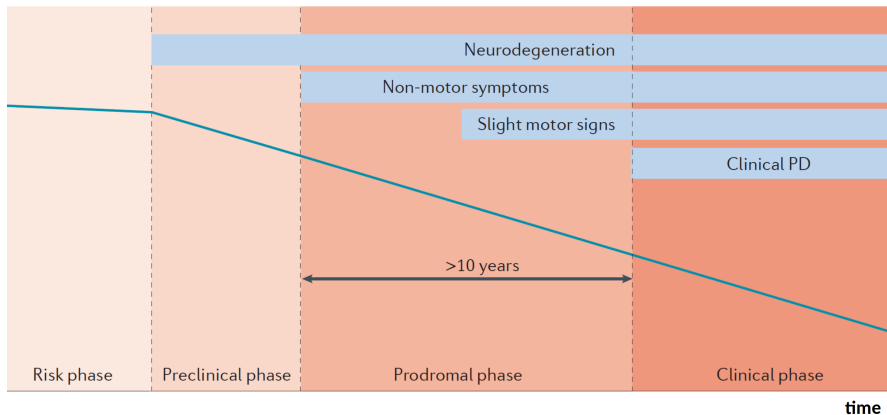
Access ...



neuroSHARE

- ▶ Develop early markers for neurodegenerative diseases
- ▶ Parkinson's disease (PD)
- ▶ Dementia with Lewy bodies (DLB)
- ▶ Alzheimer's Disease (AD)
- ▶ Multiple system atrophy (MSA)
- ▶ REM sleep behavioral disorder
- ▶ Prevalent, costly, no cure

neuroSHARE



Prodromal phase:

Appearance of initial symptoms before the full development of the disease

neuroSHARE: Three Simple Tests

- ▶ Speech test
- ▶ Sleep questionnaire
- ▶ Smell test

- ▶ Wave 10 in CZ
- ▶ All respondents after the main interview

neuroSHARE: Speech Test App

- ▶ Prolonged phonation
- ▶ Syllable repetition
- ▶ Reading
- ▶ Fairy tale
- ▶ Monologue

Nastavení mikrofonu

Během testu řeči budu nahrávat váš hlas v pěti krátkých řečových úlohách.

Vysvětlím vám a ukážu, jak jednotlivé úlohy provést.

Nejprve vám za uši nasadím mikrofon.

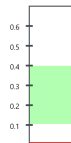
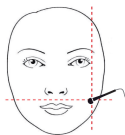
Prosím, vezměte KABEL od mikrofonu a připojte jej přes konektor ke zvukové kartě.

Připojte zvukovou kartu k notebooku přes port USB.

Ujistěte se, že je mikrofon umístěn podle obrázku níže.

Prosím, řekněte mi několik slov, abychom zkontrolovali, zda jsou kabely dobře připojeny.

Zkontrolujte, zda se červený pruh vpravo pohybuje v zelené oblasti. Pokud ne, zkontrolujte kabely.



Po úspěšném nastavení stiskněte POKRÁČOVAT

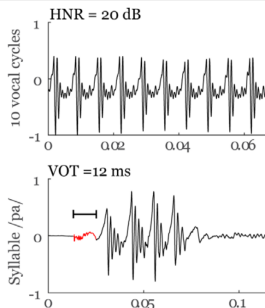
Zpět

Pokračovat

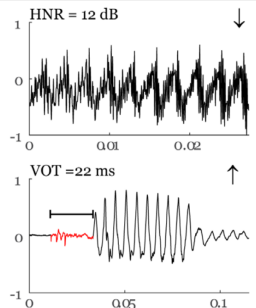
neuroSHARE: Speech Test

- ▶ Prolonged phonation
- ▶ Syllable repetition
- ▶ Reading
- ▶ Fairy tale
- ▶ Monologue

Healthy speech example



Hypokinetic dysarthria example



neuroSHARE: Smell Test

- ▶ Level
- ▶ Scents
- ▶ Standardized olfactory test (HCAP)



neuroSHARE: Clinical Examination and Future

- ▶ Combination of three tests: Odds ratio 100
- ▶ Validate by medical examination
- ▶ 5% of respondents with abnormal results
- ▶ Finances CZ-CH in Wave 11
- ▶ neuroSHARE: Part of HCAP2
- ▶ Develop self-administered mode
- ▶ bioSHARE (venous blood)

Innovations

- ▶ Vicious circle: no innovation, no money, no interesting data
- ▶ SHARE is behind
- ▶ Funding conditional on innovations

Innovations

- ▶ CTO: Main wave + Country Specific Module
- ▶ Flexible: between waves, additional modules
- ▶ Multimode: Flexible/Policy/Experimental/Multidisciplinary
- ▶ Technology: devices, objective measures
- ▶ Linkages
- ▶ External cooperation
- ▶ SHARE central support and guidance
- ▶ SBI: Research center and innovation

**MAKE SHARE DATA
GREAT AGAIN**